

Kitchen & Bath Wholesalers

(215) 634-3100

www.kbkitchenbath.com



PRODUCT BROCHURE



**NATIONWIDE
MANUFACTURER
FOR OVER
50 YEARS.
OAK AND MAPLE
CABINETRY**



GreenCabinetSource.org
CARB 93120 Compliant



Meets HUD Standards



**Coming in March:
BRETWOOD
MAPLE**

Bretwood



Kitchen Kompact is located in Jeffersonville, Indiana, across the Ohio River from Louisville, Kentucky.

We are proud to introduce our newest line of cabinetry to your kitchen. Bretwood features *maple flat panel* doors. With its warm color and clean look, Bretwood conveys a bold visual statement. Bretwood's rich undertones and autumn finish warm up your home and provide the perfect accent to your taste.



FEATURING
36" high walls
and a 42" high
angle wall



Mellowood



Create an atmosphere that complements your creativity with the smooth clean look of Mellowood. With **maple flat panel** doors, Mellowood is the perfect choice for contemporary or colorful decorating styles. The natural maple and sleek design offer simple elegance to every kitchen.



FEATURING
36" high walls
and a 42" high
angle wall

Lynwood



Our premiere line of cabinetry, Lynwood is the ideal selection when you demand the best. With **maple raised panel** doors, Lynwood provides the perfect complement to your distinctive style. High-grade maple and classic look make Lynwood the ideal choice.



FEATURING
36" high walls
and a 42" high
angle wall



Richwood Lite

OAK



Bring a designer look to your home for a fraction of the cost of custom-built cabinets. With ***oak raised panel*** doors, Richwood Lite provides the perfect stylish touch to any kitchen. A subtle wood grain complements the golden oak to provide your kitchen with the look you've always wanted.



FEATURING
36" high walls
and a 42" high
angle wall

Chadwood



Kitchen Kompact

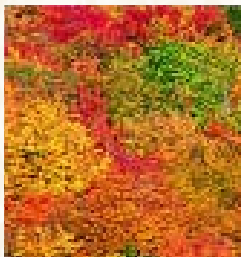
is a family-owned
company that has
been in business for
over 50 years.

Our most economical and best selling line, Chadwood is right at home in any kitchen. With ***oak flat panel*** doors, Chadwood can be designed and accessorized to fit any need, taste or budget. The golden oak finish brings out the wood grain to provide the perfect accent to any room.



FEATURING
36" high walls
and a 42" high
angle wall

The Enduring Beauty of Wood

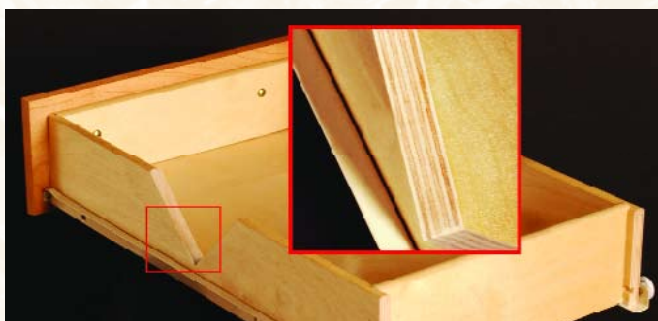


There's solid wood durability built into every KK cabinet. From the oak or maple on the doors to the solid pine corner blocks on the base cabinets, each cabinet is built to last. Note these quality features:

- All frames are built of solid 3/4" oak or maple. Each rail is kiln-dried, joined by mortise and tenon, and then glued for added strength.
- Solid wood corner blocks are glued and power nailed.
- Solid wood toe kicks, 3/4" thick.
- Solid wood hanging strips on wall and base cabinets, located at the top and bottom.
- End panels are wood veneered, 1/2" thick engineered wood core plywood.

All cabinets get stained and sealed and are protected with a durable topcoat. The result is a surface that is virtually "family-proof," resisting many household chemicals, water, alcoholic beverages, mild acids and even nail polish.

The result is more than just a kitchen you can cook in. It's a kitchen you can live in at a price you can live with.



And there's more. All Kitchen Kompact cabinets feature plywood drawers as a standard. A front-to-back epoxy-coated drawer system is securely attached to a solid wood strip in the back of the cabinet for stability, and years of smooth operation. We also offer universal design cabinets.

Kitchen Kompact, Inc. reserves the right to change design, specifications or materials without being obliged to incorporate such changes in products of prior manufacture. The artwork and specifications contained herein are the property of Kitchen Kompact, Inc. and may not be copied or reproduced without the written consent of the company.

Custom Touches

These accessories, available for KK cabinets, give any kitchen a custom look. Ask your dealer for details.

Lazy Susan



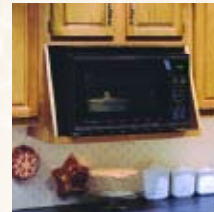
Base roll-out trays



Pantry roll-out trays



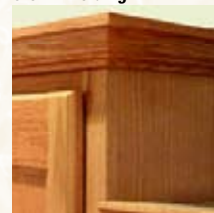
Microwave cabinet



Middletons stem glass holder



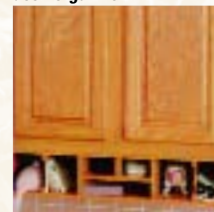
Middletons crown molding



Middletons lattice wine rack



Middletons desk organizer



Middletons Oak/Maple toe kick



Middletons wood hood



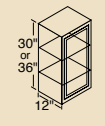
Rev-A-Shelf half moon shelf



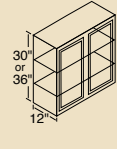
Rev-A-Shelf pull-out filler



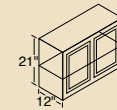
WALL Cabinets



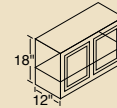
36" High
 12WT* 27WT
 15WT* 30WT
 18WT* 33WT
 21WT* 36WT
 24WT*



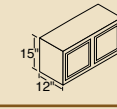
30" High
 9W* 27W
 12W* 30W
 15W* 33W
 18W* 36W
 21W* 42W
 24W* 48W



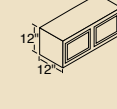
21" High
 24R* 36R
 30R 42R



18" High
 24Y* 36Y
 30Y 42Y

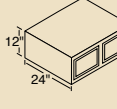


15" High
 30X 36X
 33X 39X



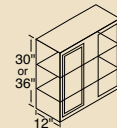
12" High
 12X12* 27X12
 15X12* 30X12
 18X12* 33X12
 21X12* 36X12
 24X12*

STACKERS

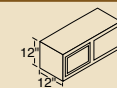


12" High
 18S* 30S
 24S*
to be stacked on BRB/Oven

WALL CORNER Cabinets

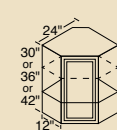


36" High
 24WCT* 36WCT*
30" High
 24WC* 42WC
 36WC* 48WC
 39WC
all can be pulled 4-1/2"



12" High
 24X12C* 36X12C*

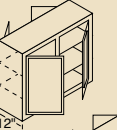
ANGLE WALL Cabinets



42" High
 24AXT

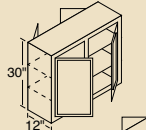


36" High
 24AT

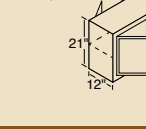


30" High
 24A

PENINSULA WALL Cabinets

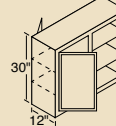


30" High
 18W-P* 36W-P
 30W-P



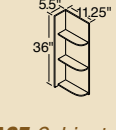
21" High
 36R-P 42R-P

PENINSULA WALL CORNER Cabinet



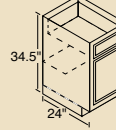
30" High
 24WC-P

WALL WHATNOT Cabinet

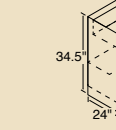


36" High
 WWN
trim to desired height and width

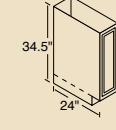
BASE Cabinets



12B* 30B
 15B* 36B
 18B* 42B
 21B* 48B
 24B*

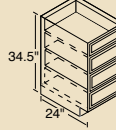


TRAY Cabinet



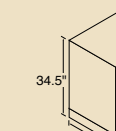
9T

DRAWER Cabinets



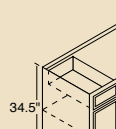
15D 24D
 18D

RANGE & SINK BASE Cabinets



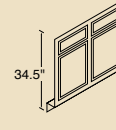
30RBS 42RBS
 36RBS

SINK BASE Cabinets



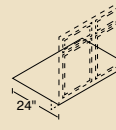
60SB 72SB
*no shelf under sink - no back
 not available in Richmond Lite or Lynwood*

SINK FRONTS



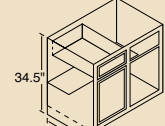
18SF* 42SF[†]
 30SF** 48SF[†]
 36SF[†]
[†] may be cut down 3" on each side; not available in maple

SINK FRONT BOTTOMS

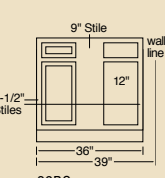


36SFB 48SFB

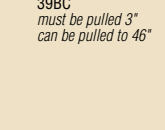
BASE CORNER Cabinets



39BC 48BC
 42BC



9" Stile
 15"
 42BC
can be pulled to 49"

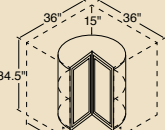


3" Stile
 21"
 39BC
must be pulled 3" can be pulled to 46"



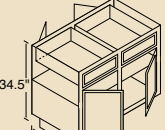
48BC
can be pulled to 49"

LAZY SUSAN CORNER Cabinet



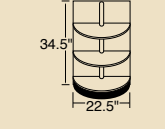
36LS
shipped without finished ends

PENINSULA BASE Cabinets



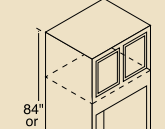
18B-P* 48B-P
 36B-P 42BC-P
 42B-P 48BC-P

BASE WHATNOT Cabinet

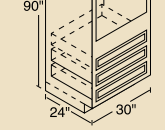


BWN

OVEN Cabinets

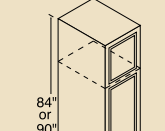


90" High
 30OUT

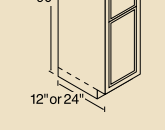


84" High
 30OU

BROOM Cabinets

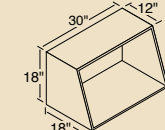


90" High
 18BRWT 24BRBT
 18BRBT



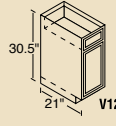
84" High
 18BRW 24BRB
 18BRB
lower doors open as one; adjustable shelf kit available for all sizes

MICROWAVE Cabinet



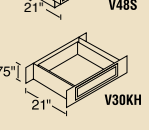
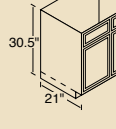
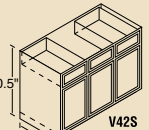
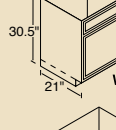
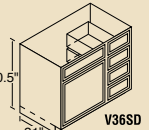
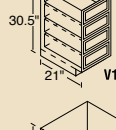
30MW
for proper height, install under a 30X cabinet

VANITY Cabinets

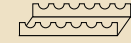


V12B V36SD
 V15D V42S[†]
 V24S V48S[†]
 V30S V30KH^{††}

[†]two outside working drawers
^{††}may be cut up to 3" on each side



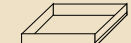
ACCESSORIES



Wine Rack (kit)



Appliance Garage
to fit beneath 24A



Pantry/Base Roll-Out Tray
 15BT 18BT 24BT

UNIVERSAL DESIGN CABINETS

Universal design cabinets are available, on special order, in a limited number of sizes.

H12B H24B H48B H39BC
 H15B H30B H15D H42BC
 H18B H36B H18D H48BC
 H21B H42B H24D

Cabinet Code Descriptions

For ease of ordering, the numerical designation indicates the cabinet width, the letter identifies the height.

*single door



Kitchen Kompact, Inc.
 911 East 11th St. (47130)
 P.O. Box 868
 Jeffersonville, IN 47131-0868
 (812) 282-6681 Phone
 (812) 282-7880 Fax

kitchenkompact.com



Kitchen Kompact is certified under the Kitchen Cabinet Manufacturers Association's Environmental Stewardship Program™.

™ This certification has been recognized by the National Association of Home Builders' (NAHB) with the Green Building Award for Advocate of the Year for its environmental and sustainability achievements.